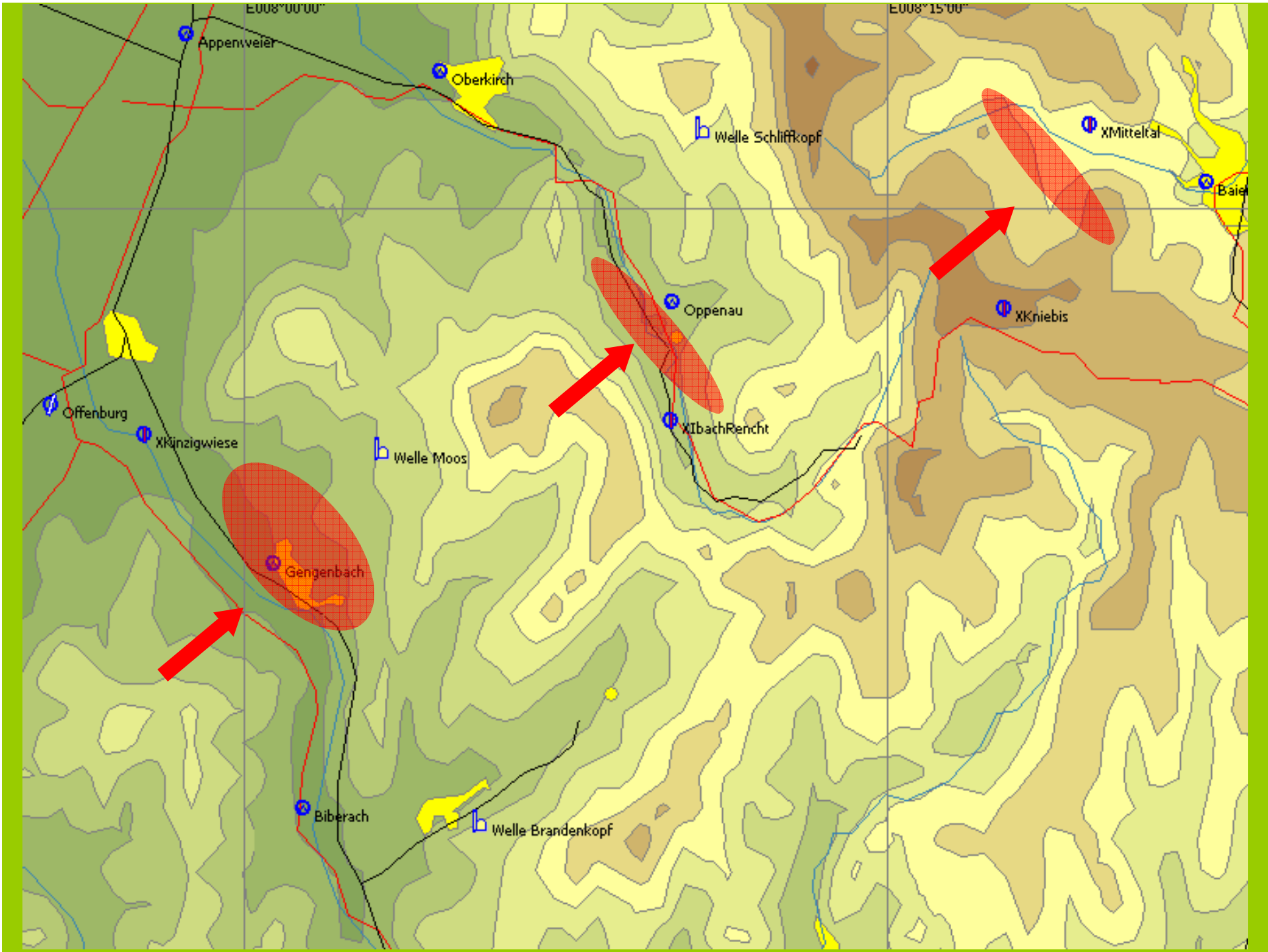


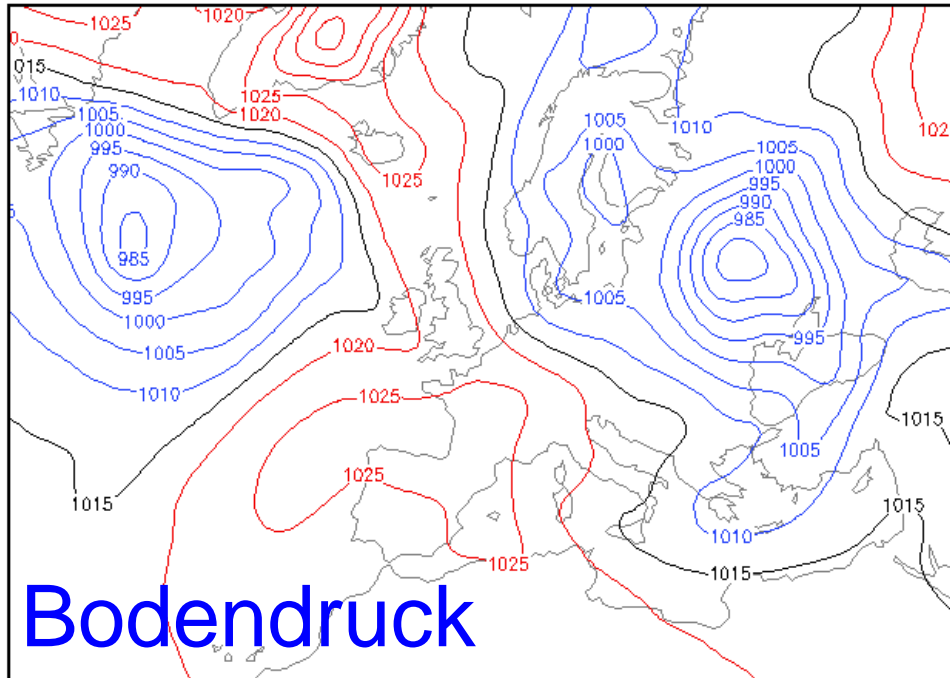
An aerial photograph of a valley in the Black Forest. The landscape is a mix of green fields, dark evergreen forests, and some autumn-colored trees. In the distance, a town with red-roofed buildings is visible. A faint rainbow is visible on the left side of the image. The sky is filled with soft, white and grey clouds, suggesting a recent rain. The text is overlaid on the image in blue and yellow colors.

# Wellenfliegen im Schwarzwald bei Westwind

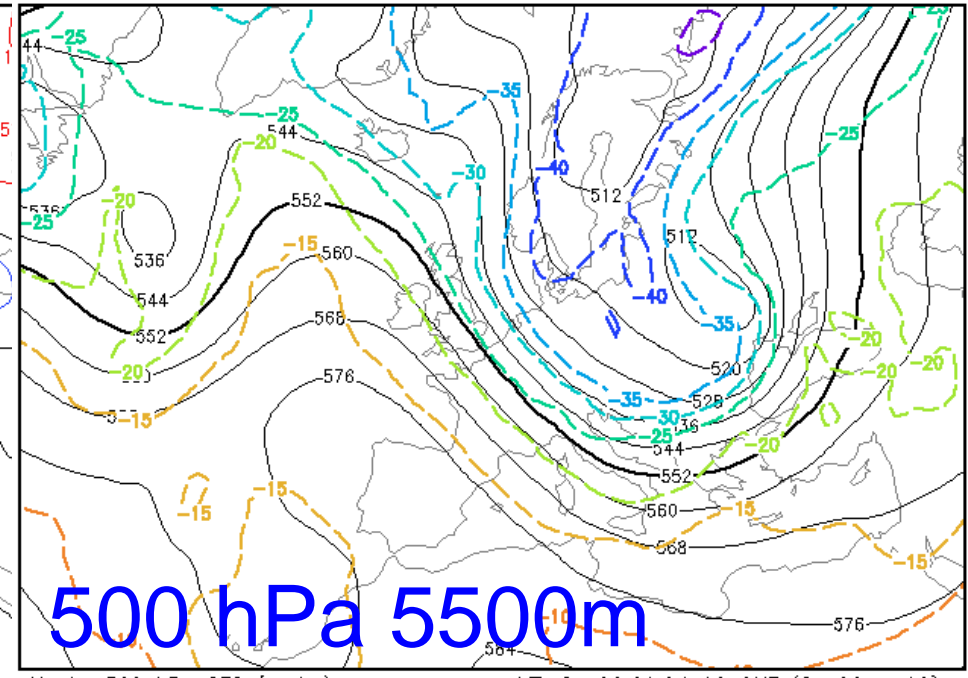
Tief unten geht es los...







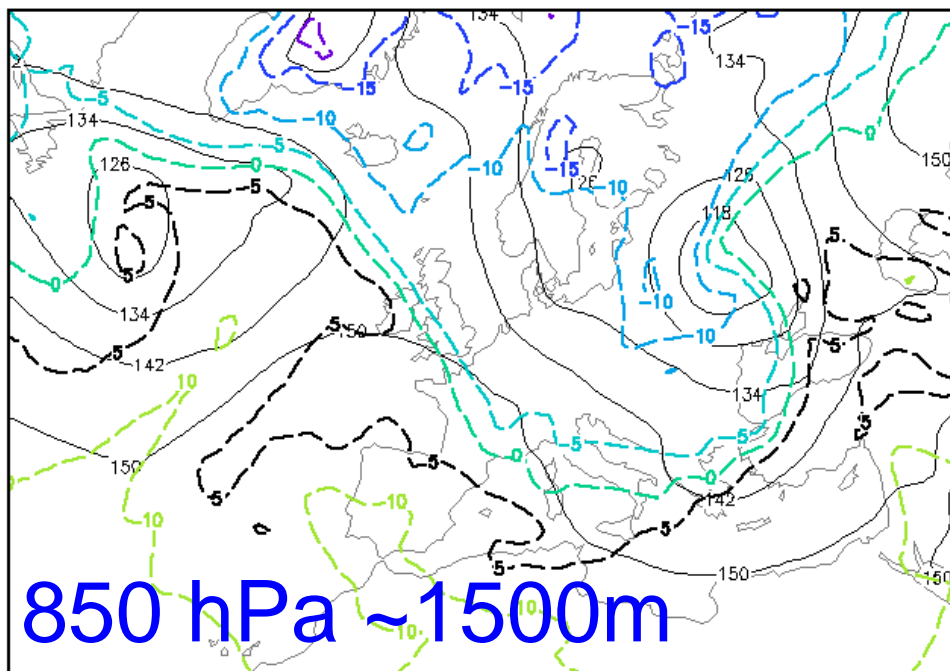
**Bodendruck**



**500 hPa 5500m**

Höhe 500 hPa GFS (gpm)  
Temperatur 500 hPa GFS (Grad C)

VT: Sa 20.11.04 12 GMT (Sa 00 + 12)  
WetterOnline

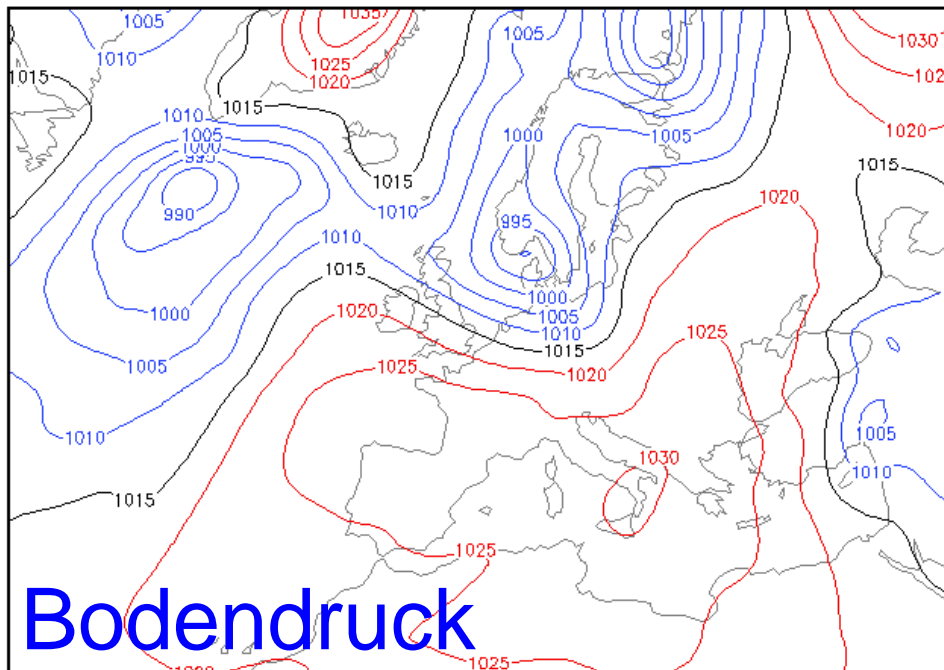


**850 hPa ~1500m**

Höhe 850 hPa GFS (gpm)  
Temperatur 850 hPa GFS (Grad C)

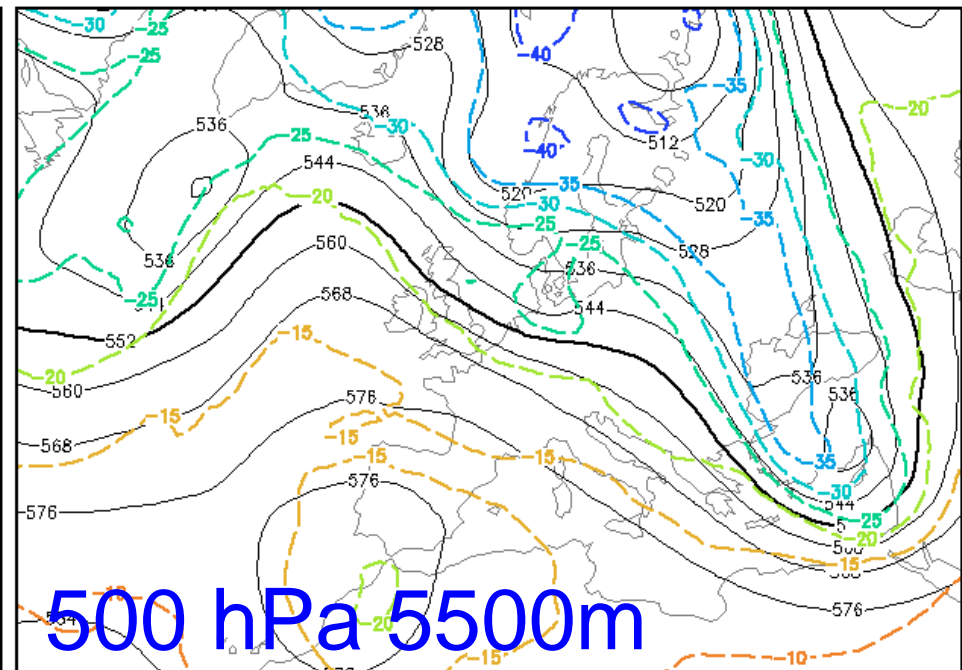
VT: Sa 20.11.04 12 GMT (Sa 00 + 12)  
WetterOnline

**20.11.04**



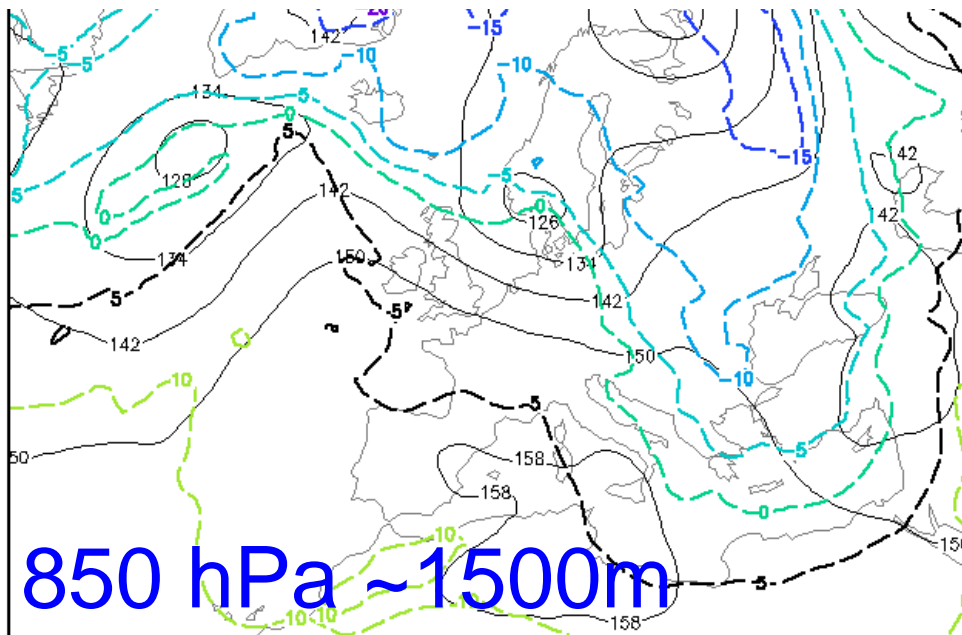
Bodendruck (NN) GFS (hPa)

VT: Mo 22.11.04 12 GMT (Mo 06 + 06)  
WetterOnline



Höhe 500 hPa GFS (gpdm)  
Temperatur 500 hPa GFS (Grad C)

VT: Mo 22.11.04 12 GMT (Mo 06 + 06)  
WetterOnline



Höhe 850 hPa GFS (gpdm)  
Temperatur 850 hPa GFS (Grad C)

VT: Mo 22.11.04 12 GMT (Mo 06 + 06)  
WetterOnline

**22.11.04**











# Wellenfluggebiet Murgtal



- FL 100 – 160
- Aktivierung ca. 1 Stunde vor Aufnahme des Flugbetriebes
- Abmeldung erforderlich
- Ausflug nur nach unten

Gültig ab 11.03.2010

Ab sofort Aktivierung nur noch über FIS Langen Tel. 06103 / 707 6200

In Ausnahmefällen über Funk Langen Information 128.950 MHz

Obergrenze max FL160

ENDE

